

Planning for and Managing a Biosphere Reserve

The Case of Mt Mulanje



Gaberone Botswana April 2011



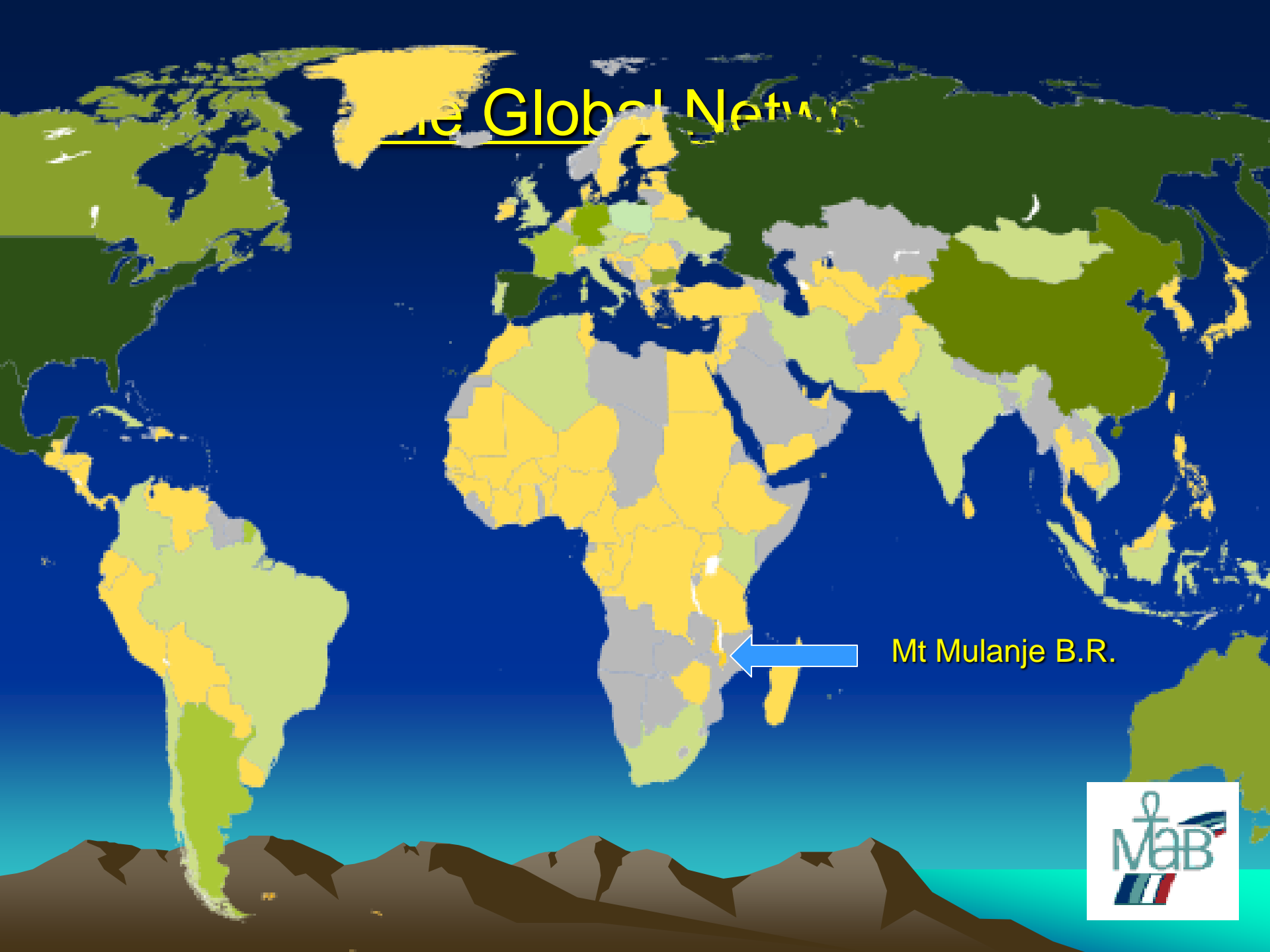
Origin & Rationale

UNESCO Man & the Biosphere Programme
was established in 1977

to promote an interdisciplinary approach to
research, training and communications
in ecosystem conservation and rational use of
natural resources.



The Global Network



Mt Mulanje B.R.



Mt Mulanje & Lake Chilwa
Biosphere Reserves



Assets

- Highest mountain in the region
- Highest rainfall in the region
- Important tourism destination
- Very high endemic biodiversity density
- Hydro energy – economic asset
- Piped water networks – health asset
- Irrigation – smallholder crops / fruits
- Timber & fuelwood production
- Many community NTFP resources



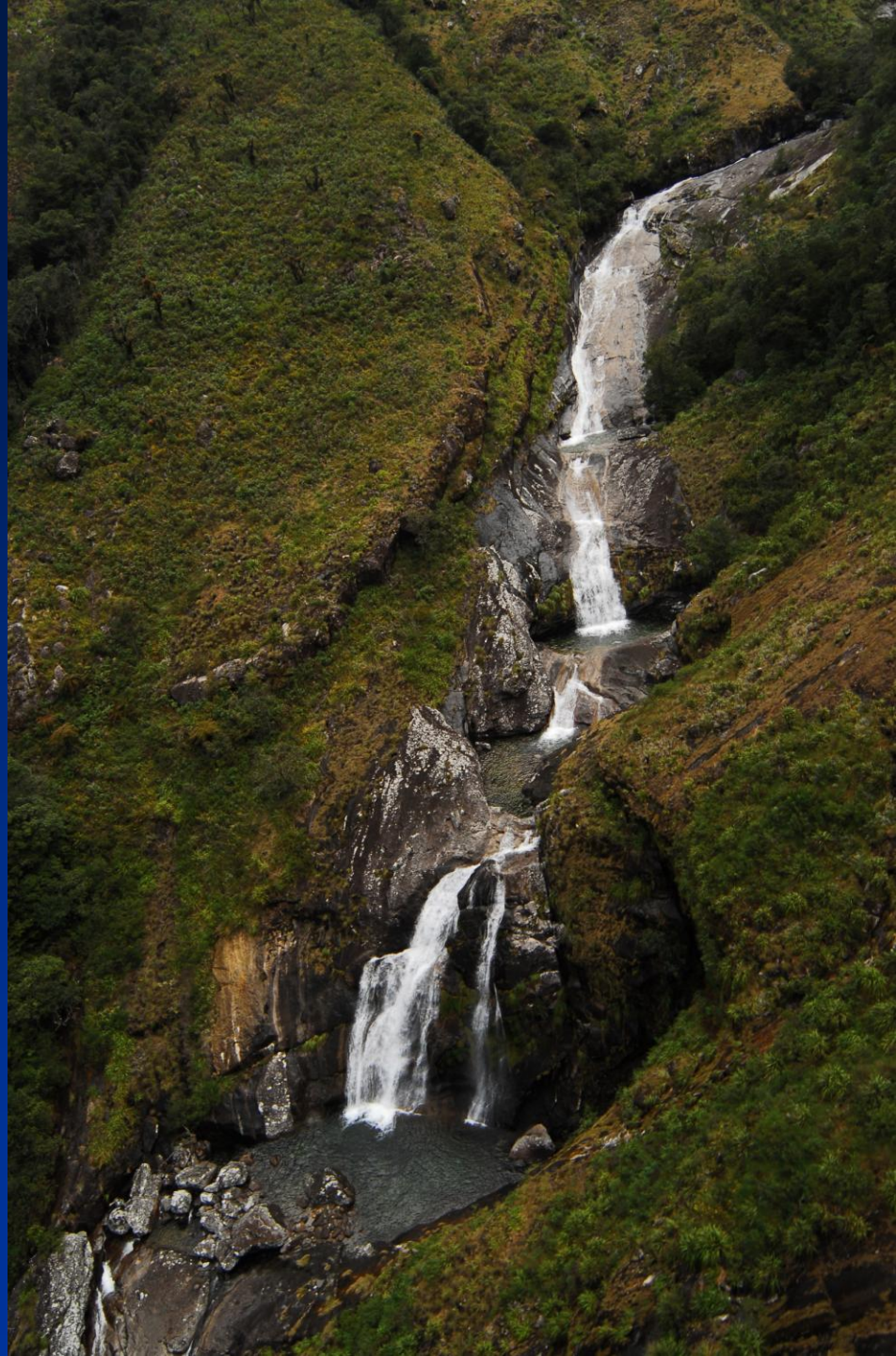












Early Concerns

- Underfinanced government management
- Single-sector focused
- No community or commercial involvement
- Insignificant status – forest reserve

Leading to:

- Few economic benefits
- Mismanagement, corruption, lack of skills,
- Wildfires, invasive aliens, illegal resource use

Biosphere Reserve seen as a platform

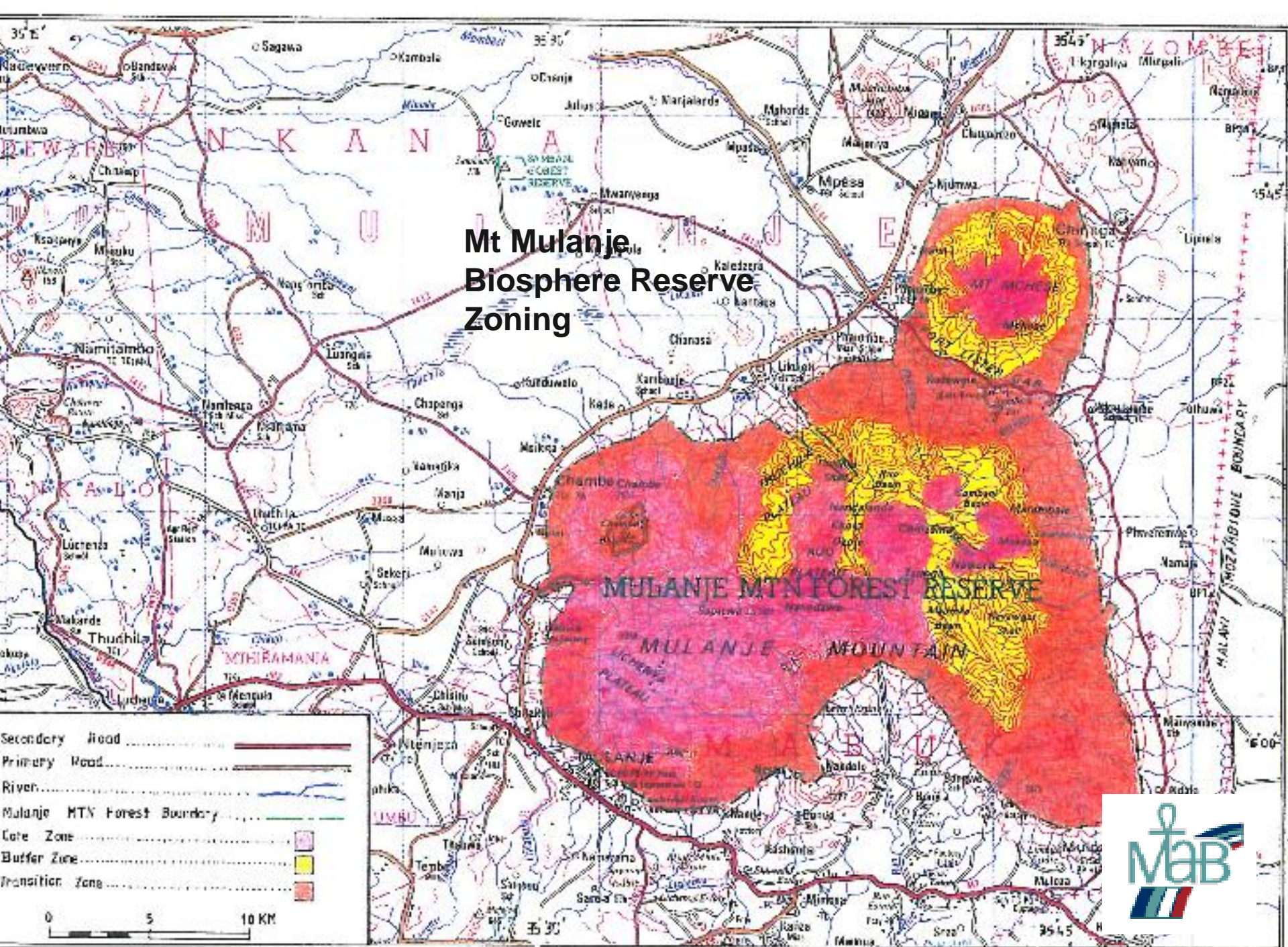


Population & Poverty

- Conservation is a social-economic challenge
- Local population within 7km distance of the mountain - 3 tribes, 6 traditional authorities, 139 villages, +400,000 people, density over 175 per km², average smallholding 0.25ha.
- Population growth needs attention
- Poverty to be addressed - a breakdown of policy and systems at a local level to explore opportunities and address challenges



Mt Mulanje Biosphere Reserve Zoning





UNITED NATIONS EDUCATIONAL, SCIENTIFIC
AND CULTURAL ORGANIZATION



*Man and the Biosphere
Programme*

*By decision of the International
Co-ordinating Council
of the Programme on Man and the Biosphere,*

Mount Mulanje · Malawi ·

*has been designated for inclusion
in the World Network of Biosphere Reserves.*

*The world's major ecosystem types and landscapes are represented in this Network,
which is devoted to conserving biological diversity,
promoting research and monitoring as well as seeking to provide models of sustainable development
in the service of humankind.*

*Participation in the World Network facilitates co-operation and exchanges
at the regional and international levels.*



Institutional Process

- Forest Reserve – 1927
- Global Biosphere Reserve - 2000
- Driver Foundation MMCT – 2002
- Community co-management agreements
- Corporate concessions
- PPP management arrangement in process
- World Heritage Site listing sought

Instruments: Management & Strategic plans
Sector / Business plans



Institutional Arrangement

Locally-based stakeholder representation for effective decision-making, management & financing of BR activities.

Options:

- Committee
- Management Authority
- Foundation
- PPP management arrangement



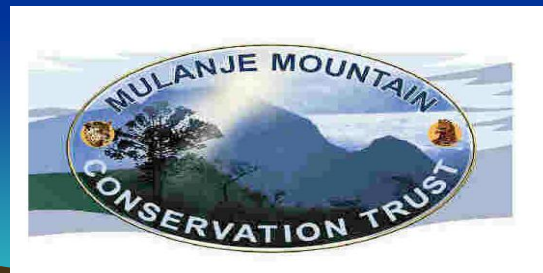
Mulanje Mountain Conservation Trust

Vision:

To strive to enable

responsible management and conservation
of the biodiversity and natural resources of
Mulanje Mountain

and to ensure equitable sharing of benefits
thereof.



Governance Composition

- Sector government resource agencies - 4
- District councils - 2
- Traditional authorities - 2
- Local NGOs - 2
- Local trade association -1
- Academic & Research Institutions - 3
- Trustees - 3



Priority Actions

MMCT core business:

- Financing priorities
- Building local organisational capacity & skills
- Facilitating partnerships
- Awareness & advocacy

Three programmes:

- Biodiversity Conservation, Research & Monitoring
- Forest Co-management & Sustainable Livelihoods
- Environmental Education & Communication



Financing Arrangements

- Endowment fund
- Increasing capitalisation
- Donor project support
- Partnerships
- Commercial cooperation
- Supply chain development
- Building local capacity
- Payments for eco-system services
- Public trust fund account for fees



Partnerships

- 30+ partnership contracts, MoU's & SA's
- 7 new development NGO's in the area
- Collaboration with 5 conservation agencies
- Donor projects - USAID, GTZ, GEF, ADB, etc
- Government tourism, energy, water sectors
- Academic / research institute cooperation
- Volunteer agencies – PCV, DED, JOVC



Donor Project Support

- Endowment capitalisation – KfW interest
- Conservation management
 - Norwegian Euro5m project on-going
- Energy supply.
 - 2 EC funded Euro1m projects on-going
- Livelihoods improvement activities.
 - 1 EC Euro1.6m project on-going
 - 1 USAID US\$3m project on-going
- Multiple small grants



Commercial Cooperation

- Tourism facilities development
- Canning factory inputs
- Timber plantations development
- Fair trade tea, macadamia & honey
- Microfinance availability
- Hydropower & solar power generation
- Institutional & household energy efficiency
- Bio-prospecting & natural products
- Fish-farming



Building Local Community Capacity

Co-management arrangements

- 6 established, further 6 in process

Livelihoods-based groups

- Beekeepers association
- Tourism association / Guides & porters association
- Fair trade crop / nut associations
- Irrigation farmers association
- Fish-farmers association

Create capacity for priority opportunities

- Mulanje Renewable Energy Agency













Payment for Ecosystem Services

- Draft public trust fund with Min of Finance
 - Tourism concession & visitor revenues
 - Estate irrigation & charged household water
 - Plantation Concession & timber revenues
 - Resource user fees
- Water catchment management arrangements
- Carbon, REDD & other innovative finance



Challenges

- Consolidate management authority
- Realising improved government capacity
- Rezoning required to larger area
- Transboundary implications – Mozambique
- Better local management status
- Legal recognition of Biosphere Reserves





Thank You!

